



YOUR **TRAINING** GUIDE



Zurich



Lufthansa
Aviation Training

Home of Training Excellence

KEY MAP

 Cafeteria / Restaurant C1

 Coffee Break Room

 Copy Room

 Defibrillator

 Fire protection

 First aid

 Lift

 Lockers

 Restroom Women, Men

 Rest Room

 Shower

 Wardrobe

B Briefing Room

CEET Cabin Emergency Evacuation Trainer

CR Classroom

DT Door Trainer

EP Equipment Parcours

FFS Full Flight Simulator

FNPT Flight and Navigation Procedures Trainer

FTD Flight Training Device

IPT Integrated Procedure Trainers

MP Multi Purpose Room

MR Meeting Room

MRT Mixed Reality Trainer


 Lufthansa Aviation Training

TABLE OF CONTENTS

Location

Lufthansa Aviation Training Center	4
------------------------------------	---

Directions

Directions by Aircraft, Car, Public Transport	5
---	---

Access

Access to the Building and Training Devices	6
---	---

Training Facilities

Overview Building	7
Overview Simulators	8

Floor Plans

Building / Level 0	9
Building / Level E1 & E2	10
Building / First Floor	11
Building / Second Floor	12
Building / Third Floor	13

Services

Services of Lufthansa Aviation Training	14
Food and Beverages	15
Lockers and Parking	16
Customer Satisfaction Management	17



LOCATION / LUFTHANSA AVIATION TRAINING CENTER

[More Information](#)
Training Facilities p.8

The Lufthansa Aviation Training Center Zurich is located near Zurich Airport.

DIRECTIONS / DIRECTIONS BY AIRCRAFT, CAR, PUBLIC TRANSPORT

Aircraft

You can take a taxi from the terminal to the Training Center at Cherstrasse 1, Opfikon. Alternatively, you can take the tram (line 10 or 12) from the airport's bus/tram terminal to "Rümlang, Bäuler" (3 stops). From there, it is a five-minute walk to the Training Center.

Car

Lufthansa Aviation Training is located close to the A1 motorway towards Berne/Basel. The closest exits are "Zürich Seebach" and "Glattbrugg". Please note that there is no visitor parking available. Please park at the Airport and take tram No. 10 or 12 to our training center (5-minute tram-ride to tram stop "Rümlang, Bäuler").

Public Transport

From downtown Zurich to LATC ZRH:

- Train S3, S9 and S15 to "Glattbrugg" (about 10 min)
- Train S7 to "Opfikon" (about 15 min)

There are direct connections between 05:39 and 00:09, also on weekends and public holidays.

From Zurich Airport to LATC ZRH:

- Tram 10/12 (5 min) and Bus 510 (5 min) to "Rümlang, Bäuler"
- Bus 768 to "Glattbrugg Post" (7 min)

Timetables:
for buses and trams: www.zvv.ch
for trains: www.sbb.ch

ACCESS / ACCESS TO THE BUILDING AND TRAINING DEVICES

Building access and check-in for simulator training

Access to the building is granted with an entitled company badge or QR-Code which is issued after completing your online registration with your name and the required training dates. The link to our eRegistration tool can be found here:

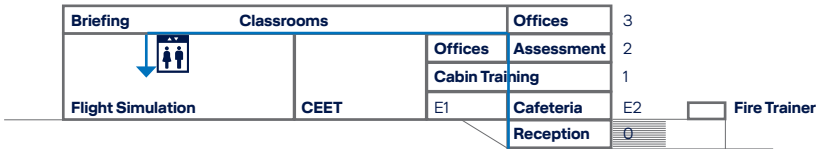
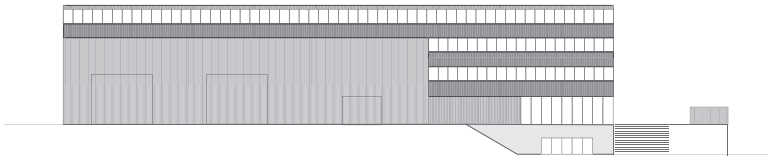
<https://eservices.lufthansa-aviation-training.com/web/eregistrationzrh/>

Additionally, to access the simulators, an entitled badge or a check-in for the session are needed.

For simulator check-in please contact our reception upon arrival or use the check-in station in the reception area or by the simulator entrance gate on the first floor outside opening hours. Please visibly carry your company badge on you at all times inside the building.

TRAINING FACILITIES / OVERVIEW BUILDING

Covering an area of 11,000 square meters, the Lufthansa Aviation Training Center in Zurich unites the complete infrastructure of an aviation training center under one roof, including the Flight School and Assessment Center. Six state-of-the-art full-flight simulators with technical rooms and flexible work stations offer everything that meets today's requirements for leading-edge airline training. In another hall, there are five fully equipped cabin trainers for cabin crew training. In addition, there are workshop rooms, focus, training and briefing rooms as well as a cafeteria and catering area, which can be used for mobile work.



Access to flight simulator hall via 3rd floor.

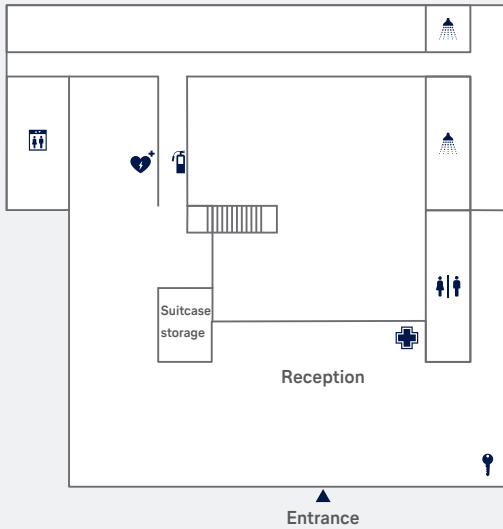
TRAINING FACILITIES / OVERVIEW SIMULATORS

Safety Training Devices		Floor
CEET Airbus A220	Level E1	p. 10
CEET Airbus A320	Level E1	p. 10
CEET Airbus A330/340	Level E1	p. 10
CEET Boeing 777-300	Level E1	p. 10
CEET Embraer E170	Level E1	p. 10
Doortrainer Airbus A220	Level E1	p. 10
Doortrainer Airbus A320/321	Level E1	p. 10
Doortrainer Airbus A330/340	Level E1	p. 10
Doortrainer Boeing 777	Level E1	p. 10
Doortrainer Embraer ERJ-145	Level E1	p. 10
Doortrainer Embraer E190-E2	Level E1	p. 10
Flight Deck Access Trainer	Level E1	p. 10
Pilot Incapacitation Trainer	Level E1	p. 10
Raft	Level E1	p. 10
Slides	Level E1	p. 10
Real Fire Fighting Trainer	Level E2 (next to terrace)	p. 10
Equipment Parcours	First Floor	p. 11
Medical Mock-Up	First Floor	p. 11
Medical Trainer	First Floor	p. 11

Full-Flight Simulators		Floor
Airbus A220 (FT123)	First Floor	p. 11
Airbus A320-200 (FT120)	First Floor	p. 11
Airbus A330-200/ 340-300 (FT121)	First Floor	p. 11
Boeing 777-300ER (FT122)	First Floor	p. 11
Embraer ERJ-145 (FT104)	First Floor	p. 11
Embraer E190-E2 (FT124)	First Floor	p. 11

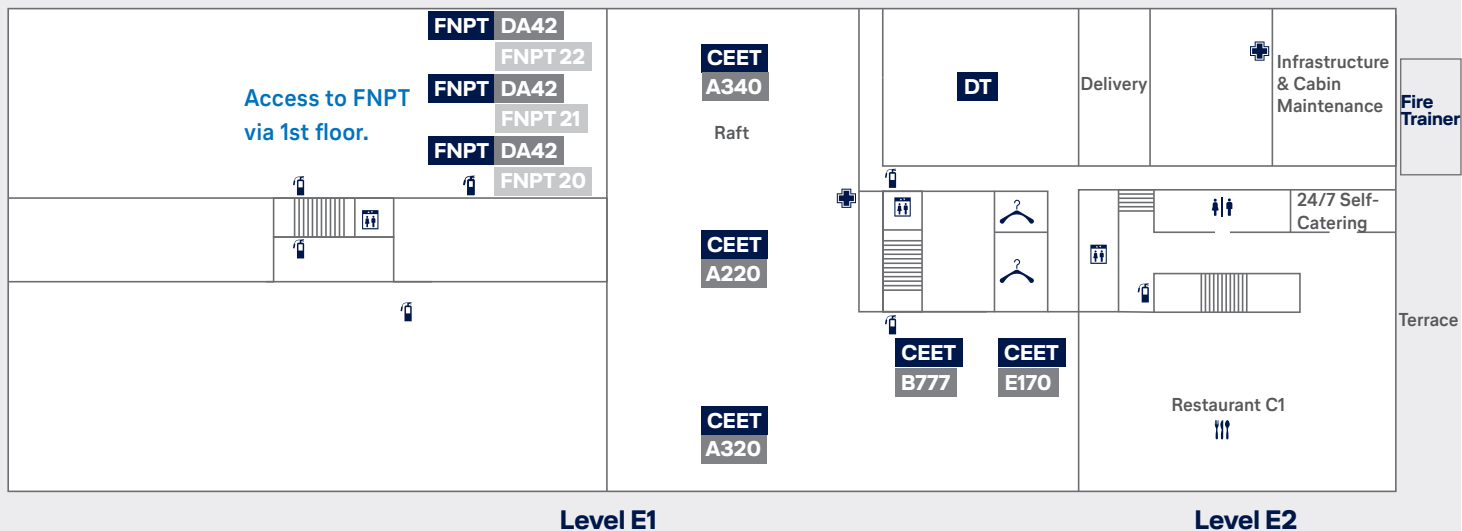
Flight Training Devices		Floor
FNPT Diamond DA-42 TDI	Level E1	p. 10
Airbus A320 (FTD01)	First Floor	p. 11
Airbus A220 IPT (PT23)	Third Floor	p. 13
Airbus A3xx IPT (PT20)	Third Floor	p. 13
Boeing 777 IPT (PT22)	Third Floor	p. 13
MRT DA42	Third Floor	p. 13

Service Training Devices		Floor
Beauty & Hair	First Floor	p. 11
Service Parcours	First Floor	p. 11
Service Training short-haul	First Floor	p. 11
Service Training long-haul	First Floor	p. 11



FLOOR PLANS / LEVEL 0

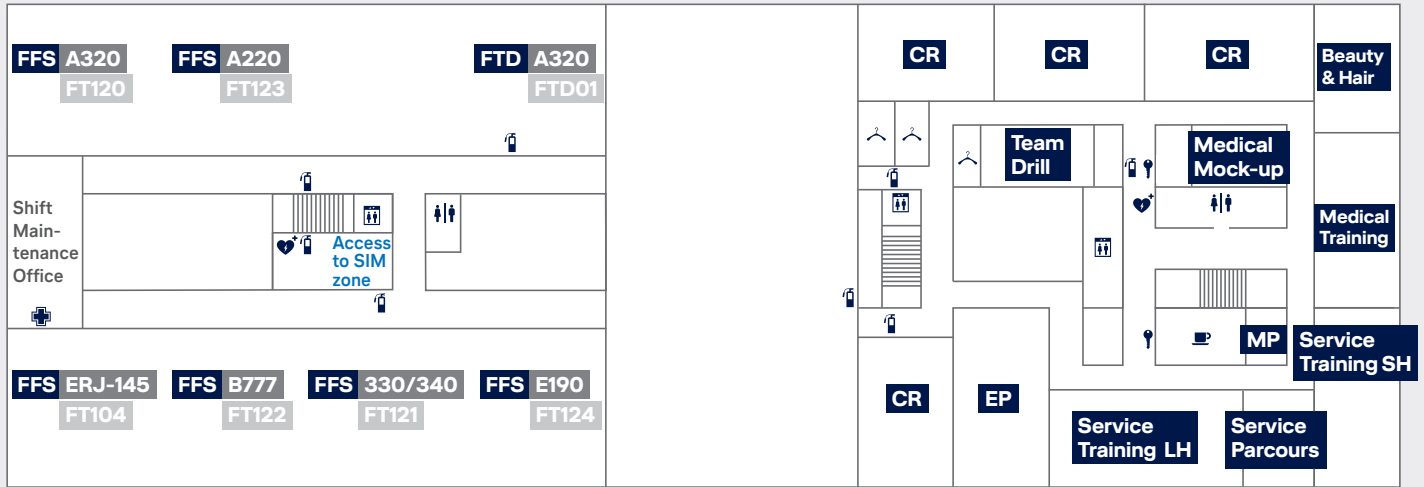
The entrance and the reception are located on level 0.



FLOOR PLANS / LEVEL E1 & E2

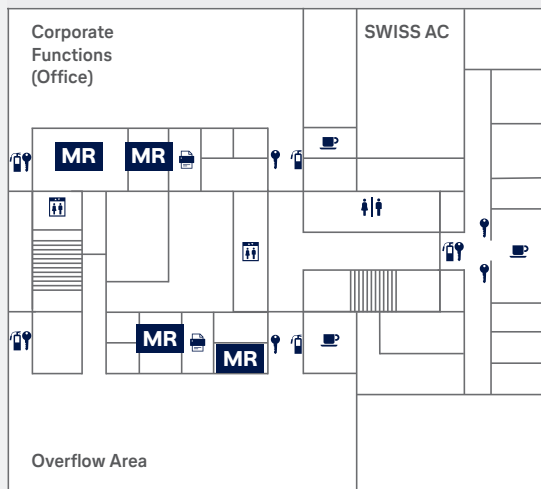
The cabin trainers and the door trainers are only be reached from the third floor. The cafeteria is based on level E2.

The FNPTs are located on level E1 but can only be accessed via the first floor which can



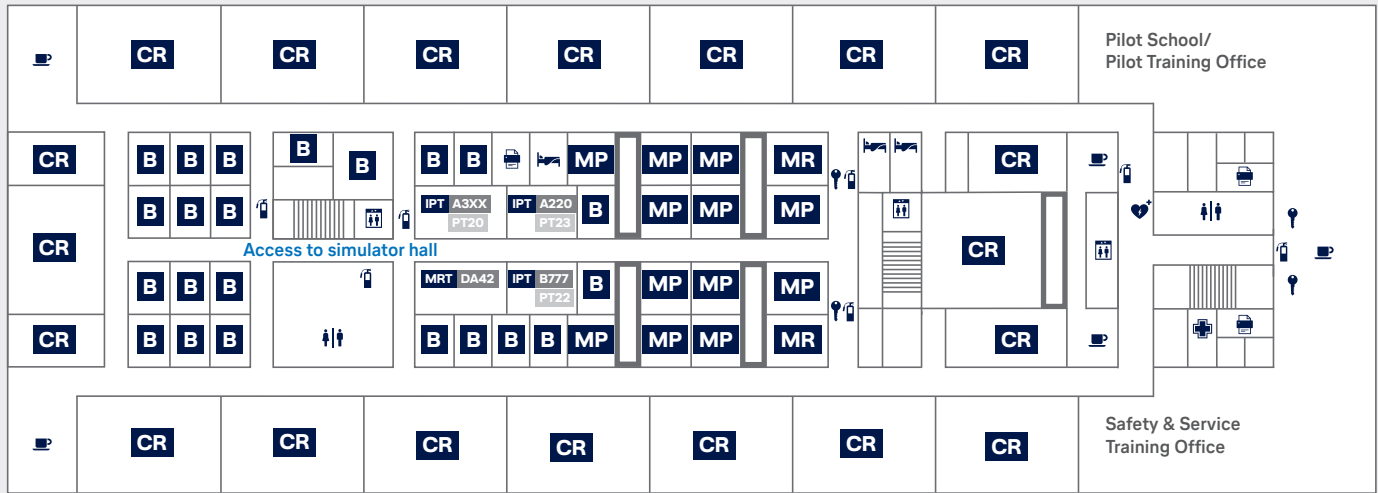
FLOOR PLANS / FIRST FLOOR

The service training, beauty, medical and equipment training rooms as well as some classrooms are situated on the first floor. The simulators can only be accessed via the third floor. Please follow the signs.



FLOOR PLANS / SECOND FLOOR

The LAT administrative offices and the SWISS Assessment Center are located on the second floor.



FLOOR PLANS / THIRD FLOOR

The Classrooms, Briefing Rooms, IPT and Pilot School/Pilot Training and Safety and Service Training Offices are located on the third floor.

The third floor provides access to the flight simulation hall.

SERVICES / SERVICES OF LUFTHANSA AVIATION TRAINING

Group Services of Lufthansa Aviation Training

24/7 Helpline

Phone: +49 69 696 72 444

Reception Desk Zurich

Our reception desk is available to support you and provide you with useful tips and information during your stay at LATC ZRH.

Opening hours: Mon–Fri 7:00 a.m. to 4:00 p.m.

Phone: +41 44 564 5900

E-mail: empfang_zrh@lat.dlh.de

Printer-Service

The “Mail to Print” function is now available at LATC ZRH: Send an e-mail with an attached PDF to print.ch@lat.dlh.de. You will receive a PIN Code by email. With this PIN you can print your document on the printers listed below. Just enter your PIN in the Password/PIN field on the printer.

PRN_005 – 3rd floor, room 3_11B (close to briefing rooms)

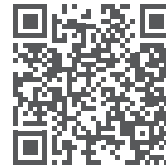
Internet/WI-FI

Corporate and public WI-FI is available throughout the building. Connect with “WLAN LAT CH Public” and register with your mobile number including country code. You will receive a SMS with username and password. Please do not delete this message! Enter

username and password. SWISS employees have access to the regular SWISS WLAN.

Taxi-Service

To order your taxi contact the reception desk or use the QR Code.



Username: LAT

Password: LAT20

SERVICES / FOOD AND BEVERAGES

Restaurant / Self-catering / Vending Machines

If you fancy a coffee, a snack, a sandwich or a hot lunch, head over to our restaurant C1 on level E2 that is open from 7:00 a.m. to 3:00 p.m. from Monday to Friday. Hot meals are available from 11:00 a.m. to 01:30 p.m.

There is a 24/7 catering area where you can buy sandwiches, salads and meals to heat up in the provided microwaves or heat up your own food when the cafeteria is not open, e.g. on weekends and public holidays.

Drinks and vending machines are also provided on every floor in the lounge areas.



More Information
Training Facilities Overview p. 8

SERVICES / LOCKERS AND PARKING

Baggage and Lockers

There is a storage room for suitcases next to the reception desk during reception hours. Lockers for smaller bags are provided opposite the reception desk as well as on the first and third floor. Long-time lockers with a personal key are available on the third floor upon request. Please contact: michael.buehrer@lat.dlh.de

Parking

Please note that there is no visitor parking available. Please park at the Airport and take tram No. 10 or 12 to our training center (5-minute tram-ride to tram stop “Rümlang, Bäuler”).

SERVICES / CUSTOMER SATISFACTION MANAGEMENT

We value your feedback

As a company with a strong customer focus, we do everything we can to provide the finest service possible. Your suggestions or criticism helps us improve. We look forward to receiving your comments. Please e-mail us at info@lat.dlh.de, or visit our website lufthansa-aviation-training.com and use the contact form in the contact area.

Lufthansa Aviation Training Switzerland AG
Cherstrasse 1
8152 Opfikon
Switzerland

Contact

Lufthansa Aviation Training Switzerland AG

Phone: +41 44 564 5900

E-mail: empfang_zrh@lat.dlh.de

lufthansa-aviation-training.com

© Lufthansa Aviation Training, 2022